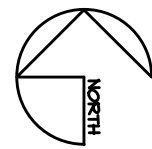
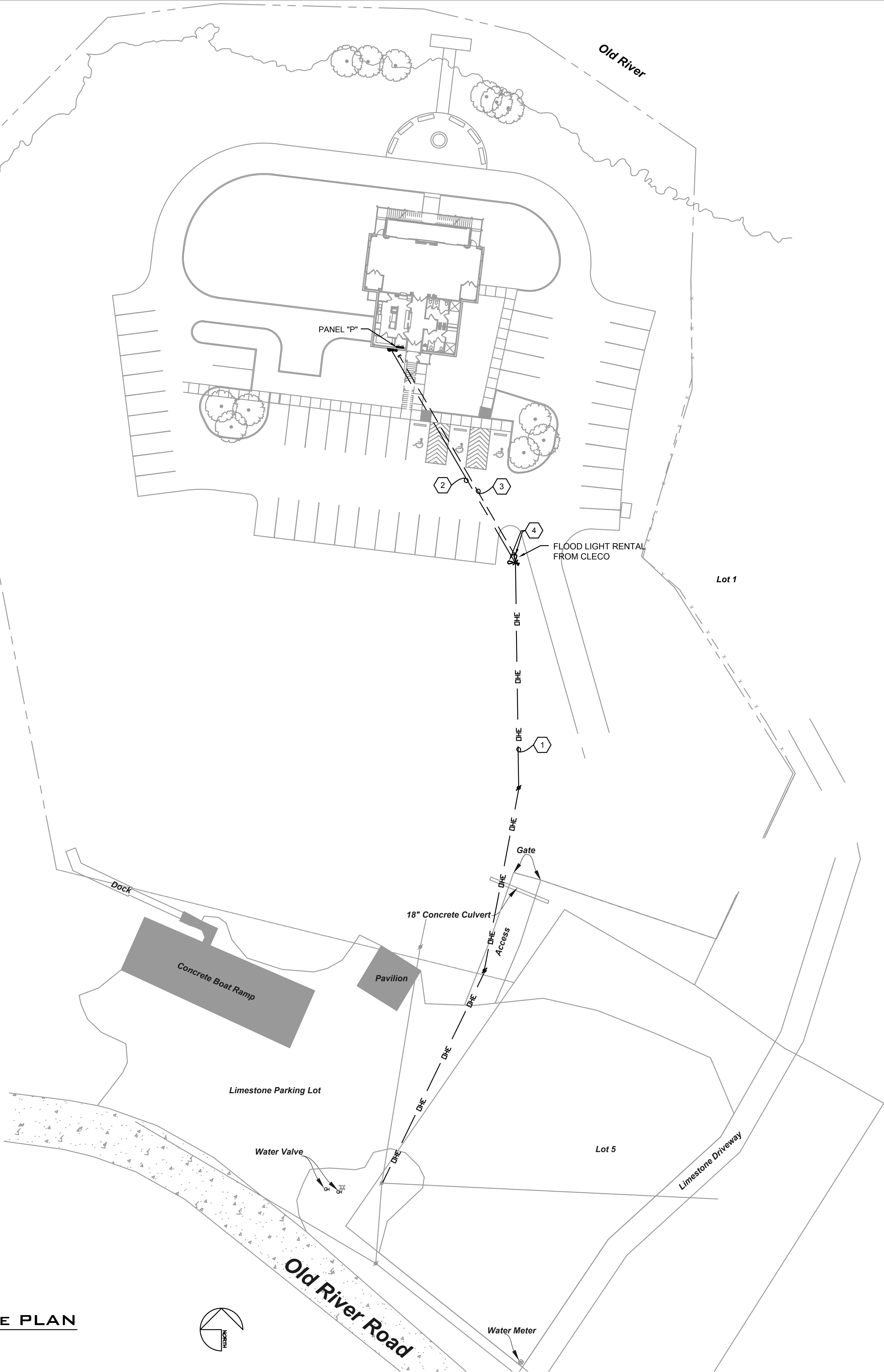


1 ELECTRICAL SITE PLAN

SCALE = 1" = 30'



Bayou LA Cabane



SITE PLAN KEYNOTES:

- 1 NEW OVERHEAD ELECTRICAL PRIMARY SERVICE BY CLECO.
- 2 UNDERGROUND FEEDER SECONDARY SERVICE. SEE RISER DIAGRAM.
- 3 1-2" C FOR CABLE TV (INTERNET) SERVICE STUBBED OUT AND TURNED UP ABOVE GRADE.
- 4 COORDINATE WITH CLECO TO PROVIDE TWO DUSK-TO-DAWN FLOOD LIGHTS MOUNTED ON UTILITY SERVICE POLE AS PART OF OWNER'S UTILITY RENTAL LIGHTING AGREEMENT.

ELECTRICAL LEGEND

NOT ALL DEVICES ARE NECESSARILY USED ON THIS PROJECT

SYMBOL	DESCRIPTION
	LIGHTING FIXTURE - SEE FIXTURE SCHEDULE
	LIGHTING FIXTURE - SEE FIXTURE SCHEDULE
	LIGHTING FIXTURE - SEE FIXTURE SCHEDULE
	LIGHTING FIXTURE - SEE FIXTURE SCHEDULE
	LIGHTING FIXTURE - SEE FIXTURE SCHEDULE
	SINGLE POLE TOGGLE SWITCH
	DIMMER SWITCH
	CEILING FAN CONTROL SWITCH
	HIGH VOLUME LOW SPEED FAN CONTROL SWITCH RE: MECH
	OCCUPANCY SENSOR
	CEILING MOUNTED OCCUPANCY SENSOR
	PHOTOELECTRIC CONTROL
	DUPLEX CONVENIENCE OUTLET
	DUPLEX W/TAMPERPROOF COVERPLATE. SEE SPECS
	COUNTER TOP MOUNTING HEIGHT (CLEAR BACK SPLASH)
	JUNCTION BOX
	DATA/COMMUNICATIONS OUTLET
	A/V HDMI OUTLET WITH 1" C TO OUTLET SHOWN
	CATV OUTLET
	WIRELESS ACCESS POINT
	CEILING FAN
	HIGH VOLUME LOW SPEED FAN RE: MECH
	ELECTRICAL PANELBOARD
	DISCONNECT SWITCH
	CONDUIT RUN CONCEALED IN WALL OR ABOVE CEILING
	HOMERUN TO ELECTRIC PANELBOARD
	CONDUIT RUN CONCEALED BELOW FLOOR OR IN SLAB
	CEILING MOUNTED
	COUNTER-TOP-HEIGHT MOUNTED
	GROUND FAULT INTERRUPTER PROTECTED
	WEATHERPROOF
	WALL MOUNTED DEVICE

GENERAL ELECTRICAL NOTES

1. CONTRACTOR SHALL REFER TO ALL OTHER PORTIONS OF THE CONTRACT DOCUMENTS (PLANS, SPECIFICATIONS, ADDENDA, ARCHITECTURAL SUPPLEMENTAL INSTRUCTIONS AND ANY APPROVED CHANGE ORDERS) AND PROVIDE ALL LIGHT FIXTURES, OUTLETS, SPECIAL SYSTEMS DEVICES, AND ASSOCIATED CIRCUITRY AS IF ORIGINALLY INCLUDED ON THE ELECTRICAL PLANS. IF THERE ARE ANY DISCREPANCIES, CONTRACTOR SHALL NOTIFY ARCHITECT/ENGINEER IN WRITING PRIOR TO ORDERING EQUIPMENT, ROUGH-IN FOR EQUIPMENT AND/OR INSTALLATION OF EQUIPMENT. PRIOR TO ROUGH-IN OF EQUIPMENT, CONTRACTOR SHALL BE RESPONSIBLE FOR OBTAINING COPIES OF APPROVED SHOP DRAWINGS OF SUCH EQUIPMENT AND REVIEWING SAID SUBMITTALS TO ENSURE COMPATIBILITY WITH THE ELECTRICAL SYSTEM. CONTRACTOR SHALL IMMEDIATELY NOTIFY ARCHITECT/ENGINEER IN WRITING OF ANY DISCREPANCIES BETWEEN THE REQUIRED ROUGH-IN REQUIREMENTS AND THE ELECTRICAL SYSTEM.
2. REFER TO ELECTRICAL DIVISION SPECIFICATIONS FOR ADDITIONAL REQUIREMENTS.
3. "PROVIDE" SHALL MEAN "FURNISH AND INSTALL" WHEN USED.
4. AS A MINIMUM ALL ELECTRICAL WORK SHALL COMPLY WITH THE 2020 EDITION OF THE NATIONAL ELECTRICAL CODE.
5. INTERIOR AND EXTERIOR LIGHTING SYSTEM CONTROLS SHALL BE FURNISHED, INSTALLED AND COMMISSIONED IN COMPLIANCE WITH SECTION C405 OF THE 2021 INTERNATIONAL ENERGY CONSERVATION CODE.
6. ALL WORK SHALL COMPLY WITH APPLICABLE LOCAL, STATE, AND FEDERAL CODES TO THE SATISFACTION OF THE AUTHORITY HAVING JURISDICTION (AHJ).
7. CONTRACTOR SHALL VISIT THE SITE AND FIELD VERIFY EXISTING CONDITIONS PRIOR TO BIDDING ANY WORK TO BE DONE.
8. CONTRACTOR SHALL COORDINATE HIS WORK WITH THAT OF OTHER TRADES AND WITH ALL APPLICABLE UTILITY COMPANIES.
9. COORDINATE SCHEDULING OF ALL POWER OUTAGES WITH OWNER A MINIMUM OF 72 HOURS IN ADVANCE.
10. ALL WIRING SHALL BE COPPER, WITH MINIMUM SIZE OF #12 AWG.
11. CIRCUITS SHALL HAVE DEDICATED NEUTRALS. NEUTRALS SHALL NOT BE SHARED.
12. VERIFY VOLTAGE FOR ALL AREAS AFFECTED PRIOR TO ORDERING LIGHT FIXTURES.
13. WHERE CIRCUITING AND CABLING ARE SHOWN TO BE REMOVED, INSURE CONTINUITY OF CIRCUITS TO EXISTING FIXTURES AND DEVICES THAT REMAIN.



ASSOCIATED DESIGN GROUP,  
301 Jackson Street, Suite 204  
Alexandria, Louisiana 71301  
Phone: (318) 445-8870  
Email: [adginc@adginc.org](mailto:adginc@adginc.org)

Project No. 26019



Project No.	0225
Drawn By:	CG
Approved By:	DBS
Preliminary Date:	MARCH 31, 2026
Release Date:	
File:	

WAYNE LAWRENCE COCO, AIA, ARCHITECT, L.L.C.

P.O. BOX 111 - 510 MAIN ST.  
SIMMESPORT, LOUISIANA 71369  
318.359.3732 / FAX 318.941.2921

Coco & Company

a professional architectural company

FUTURE FARMERS OF AMERICA  
CONFERENCE CENTER

MANSURA, LOUISIANA AT OLD RIVER

Sheet Number:

E1.1

38 of 40